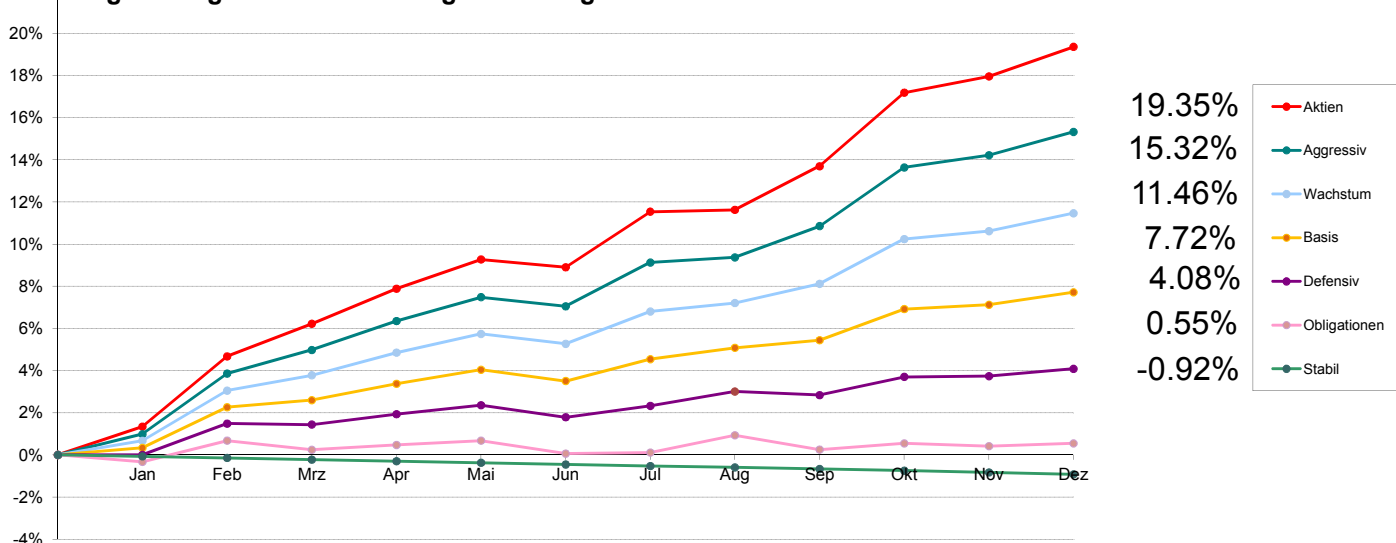


Anlagestrategien Avadis Vermögensbildung SICAV: Nettorenditen Januar - Dezember 2017



Die Zahlen zeigen die Renditen für Anleger, die seit Anfang Jahr in derselben Anlagestrategie investiert sind. Nettorendite nach Abzug der Kosten und vor Verrechnung Superzins. Angaben in Prozent. Die ausgewiesenen Renditewerte stellen keine Gewähr für zukünftige Renditewerte dar.

Nettoinventarwert (Anteilscheinkurs)

	Jan	Feb	Mrz	Apr*	Ausschüttung	Mai	Jun	Jul	Aug	Sep	Okt	Nov	Dez
Aktien	141.30	145.95	148.10	149.47	0.96	151.38	150.87	154.52	154.64	157.51	162.34	163.41	165.35
Aggressiv	135.09	138.93	140.43	141.37	0.90	142.87	142.29	145.05	145.38	147.35	151.05	151.82	153.29
Wachstum	129.29	132.35	133.28	133.52	1.14	134.65	134.05	136.01	136.52	137.68	140.38	140.86	141.94
Basis	119.70	122.00	122.40	122.00	1.33	122.78	122.15	123.37	124.01	124.44	126.18	126.42	127.12
Defensiv	109.02	110.63	110.58	109.65	1.47	110.11	109.49	110.07	110.80	110.62	111.55	111.59	111.96
Obligationen	97.07	98.05	97.63	96.33	1.52	96.53	95.94	95.99	96.77	96.12	96.40	96.28	96.40
Stabil	91.50	91.43	91.36	91.03	0.26	90.96	90.89	90.82	90.76	90.69	90.62	90.54	90.46

*nach Ausschüttung

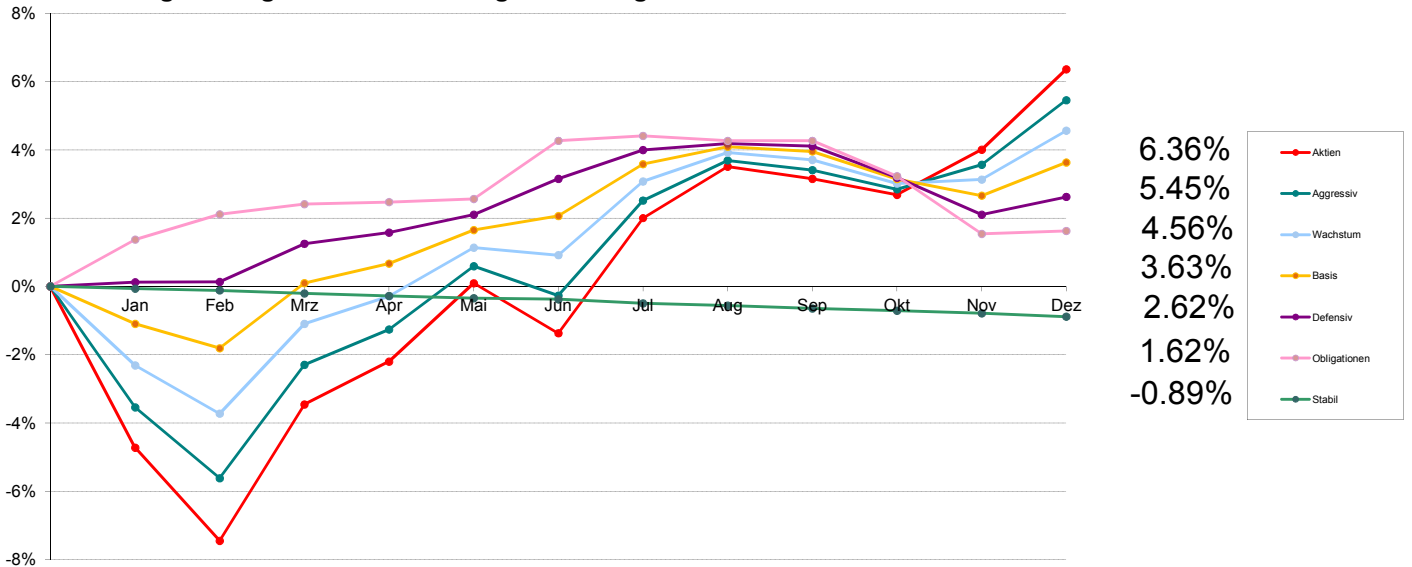
Monatsrendite

	Jan	Feb	Mrz	Apr	Mai	Jun	Jul	Aug	Sep	Okt	Nov	Dez
Aktien	1.3412%	3.2909%	1.4731%	1.5733%	1.2778%	-0.3369%	2.4193%	0.0777%	1.8559%	3.0665%	0.6591%	1.1872%
Aggressiv	0.9868%	2.8425%	1.0797%	1.3103%	1.0610%	-0.4060%	1.9397%	0.2275%	1.3551%	2.5110%	0.5098%	0.9683%
Wachstum	0.6696%	2.3668%	0.7027%	1.0354%	0.8463%	-0.4456%	1.4621%	0.3750%	0.8497%	1.9611%	0.3419%	0.7667%
Basis	0.3353%	1.9215%	0.3279%	0.7598%	0.6393%	-0.5131%	0.9988%	0.5188%	0.3467%	1.3983%	0.1902%	0.5537%
Defensiv	0.0092%	1.4768%	-0.0452%	0.4883%	0.4195%	-0.5631%	0.5297%	0.6632%	-0.1625%	0.8407%	0.0359%	0.3316%
Obligationen	-0.3286%	1.0096%	-0.4284%	0.2253%	0.2076%	-0.6112%	0.0521%	0.8126%	-0.6717%	0.2913%	-0.1245%	0.1246%
Stabil	-0.0655%	-0.0765%	-0.0766%	-0.0766%	-0.0769%	-0.0770%	-0.0770%	-0.0661%	-0.0771%	-0.0772%	-0.0883%	-0.0884%

Kumulierte Rendite (YTD)

	Jan	Feb	Mrz	Apr	Mai	Jun	Jul	Aug	Sep	Okt	Nov	Dez
Aktien	1.3412%	4.6762%	6.2182%	7.8893%	9.2679%	8.8998%	11.5344%	11.6210%	13.6926%	17.1790%	17.9513%	19.3516%
Aggressiv	0.9868%	3.8574%	4.9787%	6.3542%	7.4827%	7.0463%	9.1227%	9.3710%	10.8530%	13.6366%	14.2158%	15.3217%
Wachstum	0.6696%	3.0522%	3.7764%	4.8509%	5.7383%	5.2671%	6.8062%	7.2067%	8.1177%	10.2379%	10.6149%	11.4630%
Basis	0.3353%	2.2632%	2.5985%	3.3780%	4.0390%	3.5051%	4.5389%	5.0812%	5.4456%	6.9200%	7.1234%	7.7165%
Defensiv	0.0092%	1.4861%	1.4402%	1.9356%	2.3632%	1.7869%	2.3261%	3.0047%	2.8374%	3.7019%	3.7391%	4.0831%
Obligationen	-0.3286%	0.6777%	0.2464%	0.4723%	0.6809%	0.0656%	0.1177%	0.9312%	0.2533%	0.5453%	0.4202%	0.5453%
Stabil	-0.0655%	-0.1420%	-0.2184%	-0.2949%	-0.3716%	-0.4482%	-0.5249%	-0.5906%	-0.6673%	-0.7440%	-0.8316%	-0.9192%

Anlagestrategien Avadis Vermögensbildung SICAV: Nettorenditen Januar - Dezember 2016



Die Zahlen zeigen die Renditen für Anleger, die seit Anfang Jahr in derselben Anlagestrategie investiert sind. Nettorendite nach Abzug der Kosten und vor Verrechnung Superzins. Angaben in Prozent. Die ausgewiesenen Renditewerte stellen keine Gewähr für zukünftige Renditewerte dar.

Nettoinventarwert (Anteilscheinkurs)

	Jan	Feb	Mrz	Apr*	Ausschüttung	Mai	Jun	Jul	Aug	Sep	Okt	Nov	Dez
Aktien	124.90	121.32	126.56	128.20	0.00	131.21	129.29	133.71	135.69	135.22	134.61	136.34	139.43
Aggressiv	123.09	120.44	124.68	125.25	0.75	127.60	126.51	130.04	131.53	131.17	130.46	131.37	133.77
Wachstum	121.06	119.31	122.57	122.47	1.10	124.22	123.95	126.60	127.64	127.38	126.53	126.67	128.43
Basis	115.23	114.40	116.62	115.89	1.40	117.02	117.49	119.24	119.83	119.67	118.74	118.18	119.30
Defensiv	107.98	107.99	109.20	107.90	1.65	108.46	109.57	110.47	110.67	110.59	109.61	108.46	109.01
Obligationen	98.93	99.65	99.94	98.20	1.80	98.29	99.92	100.06	99.92	99.92	98.93	97.31	97.39
Stabil	92.57	92.52	92.44	92.12	0.25	92.06	92.03	91.92	91.86	91.78	91.72	91.65	91.56

*nach Ausschüttung

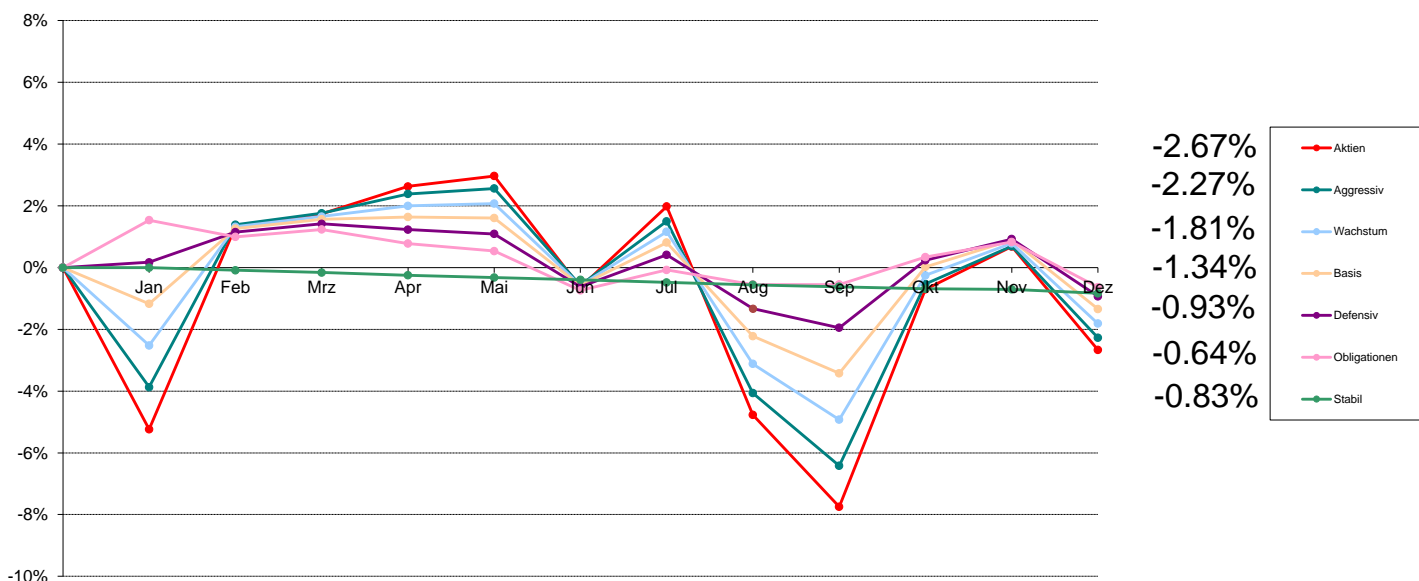
Monatsrendite

	Jan	Feb	Mrz	Apr	Mai	Jun	Jul	Aug	Sep	Okt	Nov	Dez
Aktien	-4.7219%	-2.8663%	4.3192%	1.2958%	2.3479%	-1.4633%	3.4187%	1.4808%	-0.3464%	-0.4511%	1.2852%	2.2664%
Aggressiv	-3.5420%	-2.1529%	3.5204%	1.0587%	1.8762%	-0.8542%	2.7903%	1.1458%	-0.2737%	-0.5413%	0.6975%	1.8269%
Wachstum	-2.3158%	-1.4456%	2.7324%	0.8159%	1.4289%	-0.2174%	2.1380%	0.8215%	-0.2037%	-0.6673%	0.1106%	1.3894%
Basis	-1.0986%	-0.7203%	1.9406%	0.5745%	0.9751%	0.4016%	1.4895%	0.4948%	-0.1335%	-0.7771%	-0.4716%	0.9477%
Defensiv	0.1205%	0.0093%	1.1205%	0.3205%	0.5190%	1.0234%	0.8214%	0.1810%	-0.0723%	-0.8862%	-1.0492%	0.5071%
Obligationen	1.3731%	0.7278%	0.2910%	0.0600%	0.0916%	1.6584%	0.1401%	-0.1399%	0.0000%	-0.9908%	-1.6375%	0.0822%
Stabil	-0.0648%	-0.0540%	-0.0865%	-0.0757%	-0.0651%	-0.0326%	-0.1195%	-0.0653%	-0.0871%	-0.0654%	-0.0763%	-0.0982%

Kumulierte Rendite (YTD)

	Jan	Feb	Mrz	Apr	Mai	Jun	Jul	Aug	Sep	Okt	Nov	Dez
Aktien	-4.7219%	-7.4529%	-3.4556%	-2.2046%	0.0915%	-1.3731%	1.9986%	3.5090%	3.1505%	2.6852%	4.0049%	6.3620%
Aggressiv	-3.5420%	-5.6187%	-2.2961%	-1.2617%	0.5909%	-0.2684%	2.5144%	3.6891%	3.4053%	2.8455%	3.5629%	5.4549%
Wachstum	-2.3158%	-3.7279%	-1.0974%	-0.2905%	1.1343%	0.9145%	3.0720%	3.9187%	3.7070%	3.0150%	3.1290%	4.5619%
Basis	-1.0986%	-1.8110%	0.0944%	0.6695%	1.6511%	2.0593%	3.5795%	4.0920%	3.9530%	3.1452%	2.6587%	3.6316%
Defensiv	0.1205%	0.1298%	1.2517%	1.5763%	2.1034%	3.1484%	3.9956%	4.1839%	4.1086%	3.1860%	2.1034%	2.6212%
Obligationen	1.3731%	2.1109%	2.4080%	2.4695%	2.5634%	4.2643%	4.4104%	4.2643%	4.2643%	3.2313%	1.5408%	1.6243%
Stabil	-0.0648%	-0.1188%	-0.2051%	-0.2807%	-0.3456%	-0.3781%	-0.4972%	-0.5621%	-0.6487%	-0.7137%	-0.7895%	-0.8869%

Anlagestrategien Avadis Vermögensbildung SICAV: Nettorenditen Januar - Dezember 2015



Die Zahlen zeigen die Renditen für Anleger, die seit Anfang Jahr in derselben Anlagestrategie investiert sind. Nettorendite nach Abzug der Kosten und vor Verrechnung Superzins. Angaben in Prozent. Die ausgewiesenen Renditewerte stellen keine Gewähr für zukünftige Rendite werte dar.

Nettoinventarwert (Anteilscheinkurs)

	Jan	Feb	Mrz	Apr*	Ausschüttung	Mai	Jun	Jul	Aug	Sep	Okt	Nov	Dez
Aktien	127.63	136.48	137.02	138.22	0.00	138.68	133.82	137.35	128.26	124.25	133.73	135.60	131.09
Aggressiv	125.61	132.49	132.97	133.69	0.10	133.92	129.83	132.53	125.27	122.19	129.88	131.48	127.61
Wachstum	123.75	128.63	129.05	128.74	0.75	128.83	125.50	127.68	122.28	120.00	125.90	127.21	123.93
Basis	117.97	120.88	121.24	120.03	1.30	119.99	117.41	119.05	115.47	114.05	118.12	119.14	116.51
Defensiv	110.73	111.81	112.11	110.20	1.70	110.05	108.18	109.31	107.41	106.74	109.12	109.87	107.85
Obligationen	101.74	101.20	101.44	98.98	2.00	98.74	97.49	98.14	97.68	97.68	98.55	99.03	97.59
Stabil	93.91	93.83	93.76	93.18	0.50	93.11	93.04	92.96	92.89	92.83	92.77	92.75	92.63

*nach Ausschüttung

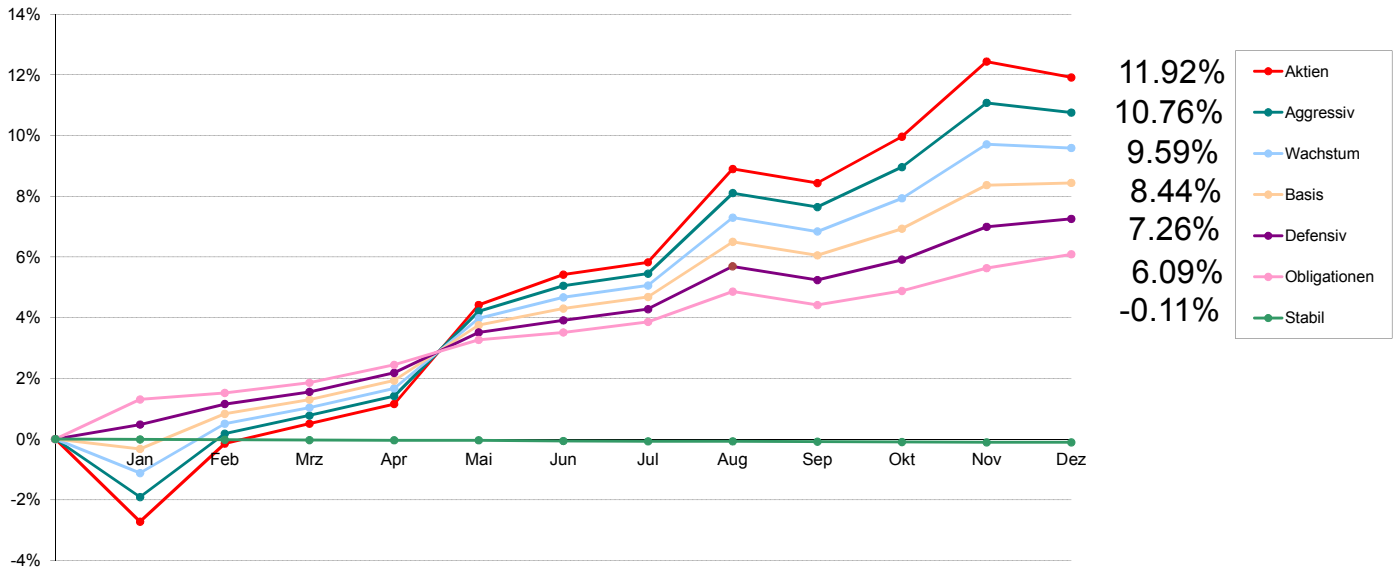
Monatsrendite

	Jan	Feb	Mrz	Apr	Mai	Jun	Jul	Aug	Sep	Okt	Nov	Dez
Aktien	-5.2346%	6.9341%	0.3957%	0.8758%	0.3328%	-3.5045%	2.6379%	-6.6181%	-3.1265%	7.6298%	1.3983%	-3.3260%
Aggressiv	-3.8724%	5.4773%	0.3623%	0.6167%	0.1720%	-3.0541%	2.0796%	-5.4780%	-2.4587%	6.2935%	1.2319%	-2.9434%
Wachstum	-2.5207%	3.9434%	0.3265%	0.3410%	0.0699%	-2.5848%	1.7371%	-4.2293%	-1.8646%	4.9167%	1.0405%	-2.5784%
Basis	-1.1728%	2.4667%	0.2978%	0.0742%	-0.0333%	-2.1502%	1.3968%	-3.0071%	-1.2298%	3.5686%	0.8635%	-2.2075%
Defensiv	0.1719%	0.9753%	0.2683%	-0.1873%	-0.1361%	-1.6992%	1.0446%	-1.7382%	-0.6238%	2.2297%	0.6873%	-1.8385%
Obligationen	1.5369%	-0.5308%	0.2372%	-0.4535%	-0.2425%	-1.2660%	0.6667%	-0.4687%	0.0000%	0.8907%	0.4871%	-1.4541%
Stabil	0.0000%	-0.0852%	-0.0746%	-0.0853%	-0.0751%	-0.0752%	-0.0860%	-0.0753%	-0.0646%	-0.0646%	-0.0216%	-0.1294%

Kumulierte Rendite (YTD)

	Jan	Feb	Mrz	Apr	Mai	Jun	Jul	Aug	Sep	Okt	Nov	Dez
Aktien	-5.2346%	1.3365%	1.7375%	2.6285%	2.9700%	-0.6386%	1.9825%	-4.7669%	-7.7443%	-0.7054%	0.6831%	-2.6656%
Aggressiv	-3.8724%	1.3928%	1.7602%	2.3877%	2.5638%	-0.5685%	1.4993%	-4.0608%	-6.4197%	-0.5302%	0.6951%	-2.2687%
Wachstum	-2.5207%	1.3234%	1.6542%	2.0008%	2.0721%	-0.5663%	1.1609%	-3.1175%	-4.9239%	-0.2493%	0.7886%	-1.8102%
Basis	-1.1728%	1.2650%	1.5666%	1.6420%	1.6081%	-0.5767%	0.8121%	-2.2195%	-3.4219%	0.0246%	0.8883%	-1.3388%
Defensiv	0.1719%	1.1489%	1.4203%	1.2303%	1.0925%	-0.6253%	0.4128%	-1.3326%	-1.9481%	0.2382%	0.9272%	-0.9284%
Obligationen	1.5369%	0.9980%	1.2375%	0.7784%	0.5341%	-0.7386%	-0.0768%	-0.5452%	-0.5452%	0.3406%	0.8294%	-0.6368%
Stabil	0.0000%	-0.0852%	-0.1597%	-0.2449%	-0.3199%	-0.3948%	-0.4804%	-0.5554%	-0.6196%	-0.6838%	-0.7053%	-0.8337%

Anlagestrategien Avadis Vermögensbildung SICAV: Nettorenditen Januar - Dezember 2014



Die Zahlen zeigen die Renditen für Anleger, die seit Anfang Jahr in derselben Anlagestrategie investiert sind. Nettorendite nach Abzug der Kosten und vor Verrechnung Superzins. Angaben in Prozent. Die ausgewiesenen Renditewerte stellen keine Gewähr für zukünftige Renditewerte dar.

Nettoinventarwert (Anteilscheinkurs)

	Jan	Feb	Mrz	Apr*	Ausschüttung	Mai	Jun	Jul	Aug	Sep	Okt	Nov	Dez
Aktien	117.16	120.26	121.05	121.73	0.10	125.66	126.86	127.35	131.05	130.49	132.33	135.31	134.68
Aggressiv	116.30	118.78	119.49	119.65	0.60	122.94	123.94	124.41	127.54	127.00	128.55	131.05	130.67
Wachstum	115.61	117.51	118.13	117.77	1.10	120.45	121.25	121.70	124.29	123.76	125.03	127.09	126.95
Basis	111.14	112.43	112.95	112.20	1.45	114.21	114.81	115.23	117.23	116.74	117.71	119.29	119.37
Defensiv	105.32	106.03	106.45	105.31	1.80	106.68	107.09	107.47	108.92	108.46	109.15	110.27	110.54
Obligationen	97.76	97.97	98.29	96.76	2.10	97.54	97.77	98.10	99.04	98.62	99.06	99.77	100.20
Stabil	95.00	94.99	94.98	93.97	1.00	93.97	93.95	93.94	93.94	93.93	93.92	93.91	93.91

*nach Ausschüttung

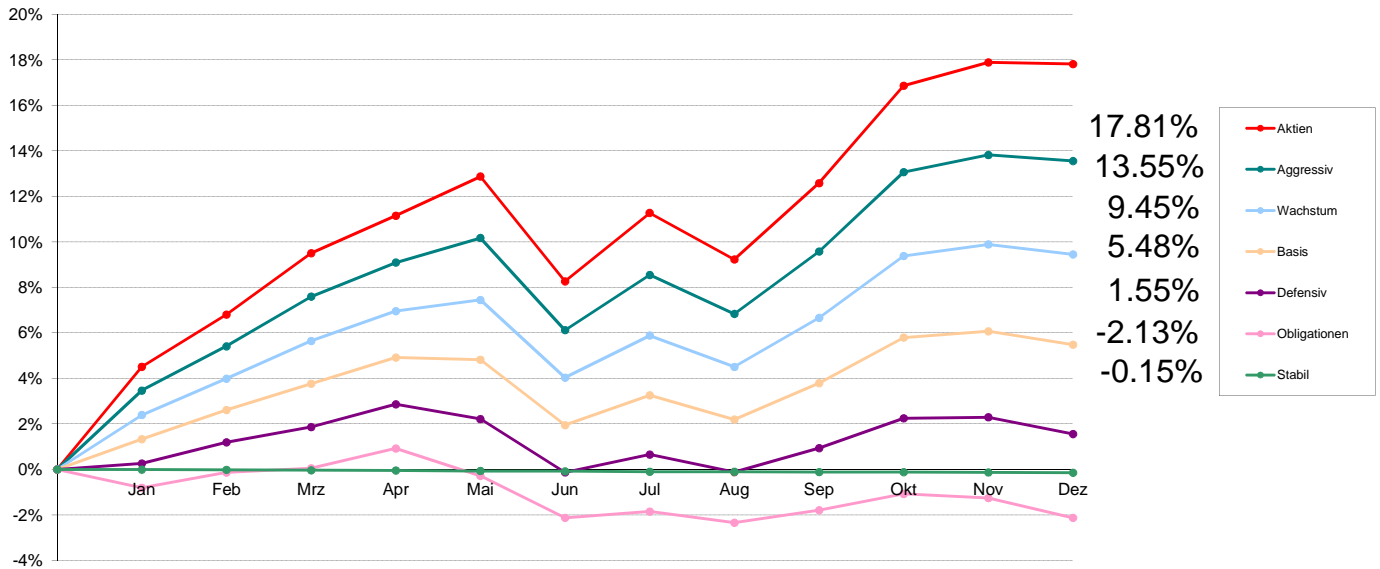
Monatsrendite

	Jan	Feb	Mrz	Apr	Mai	Jun	Jul	Aug	Sep	Okt	Nov	Dez
Aktien	-2.7233%	2.6460%	0.6569%	0.6444%	3.2285%	0.9550%	0.3863%	2.9054%	-0.4273%	1.4101%	2.2519%	-0.4656%
Aggressiv	-1.9145%	2.1324%	0.5977%	0.6360%	2.7497%	0.8134%	0.3792%	2.5159%	-0.4234%	1.2205%	1.9448%	-0.2900%
Wachstum	-1.1204%	1.6435%	0.5276%	0.6264%	2.2756%	0.6642%	0.3711%	2.1282%	-0.4264%	1.0262%	1.6476%	-0.1102%
Basis	-0.3229%	1.1607%	0.4625%	0.6197%	1.7914%	0.5253%	0.3658%	1.7357%	-0.4180%	0.8309%	1.3423%	0.0671%
Defensiv	0.4770%	0.6741%	0.3961%	0.6200%	1.3009%	0.3843%	0.3548%	1.3492%	-0.4223%	0.6362%	1.0261%	0.2449%
Obligationen	1.3057%	0.2148%	0.3266%	0.5799%	0.8061%	0.2358%	0.3375%	0.9582%	-0.4241%	0.4462%	0.7167%	0.4310%
Stabil	-0.0105%	-0.0105%	-0.0105%	-0.0105%	0.0000%	-0.0213%	-0.0106%	0.0000%	-0.0106%	-0.0106%	-0.0106%	0.0000%

Kumulierte Rendite (YTD)

	Jan	Feb	Mrz	Apr	Mai	Jun	Jul	Aug	Sep	Okt	Nov	Dez
Aktien	-2.7233%	-0.1495%	0.5065%	1.1541%	4.4198%	5.4170%	5.8242%	8.8988%	8.4334%	9.9624%	12.4387%	11.9152%
Aggressiv	-1.9145%	0.1771%	0.7759%	1.4169%	4.2055%	5.0531%	5.4515%	8.1046%	7.6468%	8.9606%	11.0797%	10.7576%
Wachstum	-1.1204%	0.5046%	1.0349%	1.6678%	3.9814%	4.6720%	5.0605%	7.2964%	6.8388%	7.9352%	9.7135%	9.5927%
Basis	-0.3229%	0.8341%	1.3004%	1.9283%	3.7542%	4.2993%	4.6809%	6.4978%	6.0526%	6.9338%	8.3692%	8.4418%
Defensiv	0.4770%	1.1544%	1.5550%	2.1847%	3.5140%	3.9119%	4.2806%	5.6876%	5.2412%	5.9107%	6.9975%	7.2595%
Obligationen	1.3057%	1.5233%	1.8549%	2.4456%	3.2714%	3.5149%	3.8643%	4.8596%	4.4149%	4.8807%	5.6325%	6.0877%
Stabil	-0.0105%	-0.0211%	-0.0316%	-0.0421%	-0.0421%	-0.0634%	-0.0740%	-0.0740%	-0.0846%	-0.0953%	-0.1059%	-0.1059%

Anlagestrategien Avadis Vermögensbildung SICAV: Nettorenditen Januar - Dezember 2013



Die Zahlen zeigen die Renditen für Anleger, die seit Anfang Jahr in derselben Anlagestrategie investiert sind. Nettorendite nach Abzug der Kosten und vor Verrechnung Superzins. Angaben in Prozent. Die ausgewiesenen Renditewerte stellen keine Gewähr für zukünftige Renditewerte dar.

Nettoinventarwert (Anteilscheinkurs)

	Jan	Feb	Mrz	Apr*	Ausschüttung	Mai	Jun	Jul	Aug	Sep	Okt	Nov	Dez
Aktien	107.69	110.05	112.83	113.63	0.90	115.39	110.68	113.75	111.66	115.09	119.47	120.52	120.44
Aggressiv	109.08	111.13	113.44	113.91	1.10	115.04	110.81	113.34	111.56	114.42	118.06	118.85	118.57
Wachstum	110.67	112.40	114.19	114.26	1.35	114.78	111.13	113.11	111.64	113.94	116.85	117.39	116.92
Basis	108.65	110.03	111.27	110.90	1.60	110.80	107.76	109.15	108.02	109.71	111.83	112.12	111.50
Defensiv	105.19	106.17	106.87	106.17	1.75	105.50	103.08	103.89	103.09	104.18	105.54	105.58	104.82
Obligationen	99.72	100.39	100.58	99.50	1.95	98.32	96.50	96.77	96.29	96.83	97.53	97.36	96.50
Stabil	96.09	96.08	96.06	95.10	0.95	95.08	95.07	95.05	95.05	95.04	95.03	95.02	95.01

*nach Ausschüttung

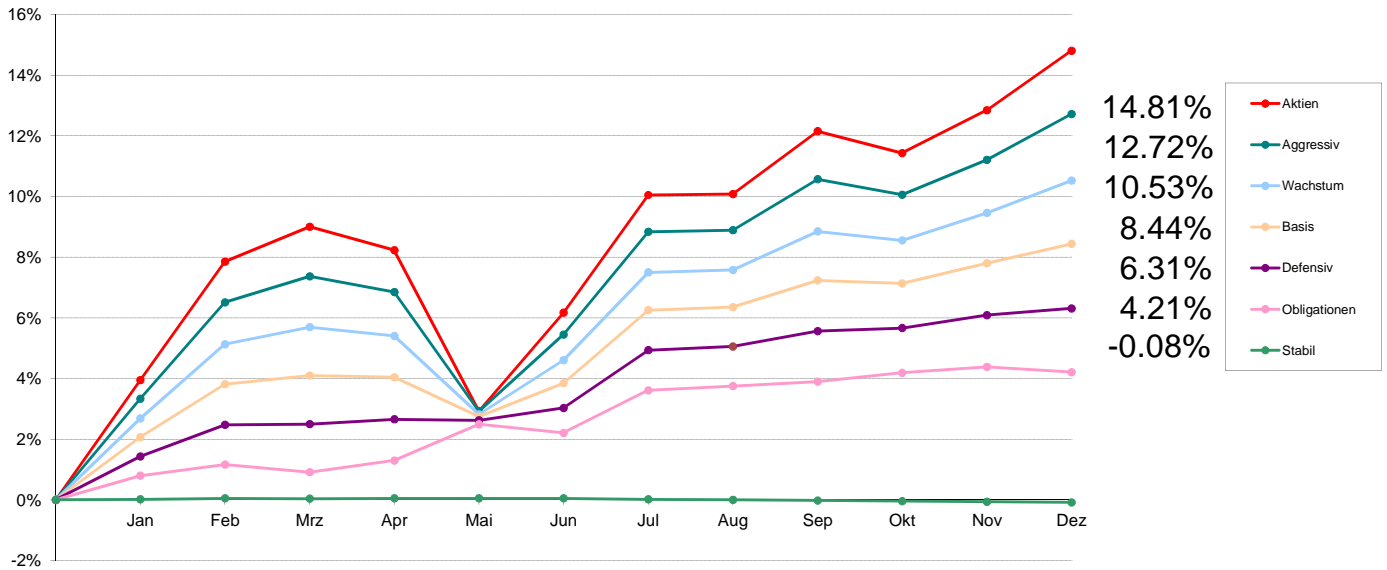
Monatsrendite

	Jan	Feb	Mrz	Apr	Mai	Jun	Jul	Aug	Sep	Okt	Nov	Dez
Aktien	4.5128%	2.1915%	2.5261%	1.5067%	1.5489%	-4.0818%	2.7738%	-1.8374%	3.0718%	3.8057%	0.8789%	-0.0664%
Aggressiv	3.4620%	1.8794%	2.0786%	1.3840%	0.9920%	-3.6770%	2.2832%	-1.5705%	2.5636%	3.1813%	0.6692%	-0.2356%
Wachstum	2.3869%	1.5632%	1.5925%	1.2435%	0.4551%	-3.1800%	1.7817%	-1.2996%	2.0602%	2.5540%	0.4621%	-0.4004%
Basis	1.3243%	1.2701%	1.1270%	1.1054%	-0.0902%	-2.7437%	1.2899%	-1.0353%	1.5645%	1.9324%	0.2593%	-0.5530%
Defensiv	0.2573%	0.9316%	0.6593%	0.9825%	-0.6311%	-2.2938%	0.7858%	-0.7700%	1.0573%	1.3054%	0.0379%	-0.7198%
Obligationen	-0.8057%	0.6719%	0.1893%	0.8650%	-1.1859%	-1.8511%	0.2798%	-0.4960%	0.5608%	0.7229%	-0.1743%	-0.8833%
Stabil	-0.0104%	-0.0104%	-0.0208%	-0.0104%	-0.0210%	-0.0105%	-0.0210%	0.0000%	-0.0105%	-0.0105%	-0.0105%	-0.0105%

Kumulierte Rendite (YTD)

	Jan	Feb	Mrz	Apr	Mai	Jun	Jul	Aug	Sep	Okt	Nov	Dez
Aktien	4.5128%	6.8032%	9.5012%	11.1510%	12.8726%	8.2654%	11.2684%	9.2240%	12.5792%	16.8636%	17.8907%	17.8124%
Aggressiv	3.4620%	5.4064%	7.5975%	9.0866%	10.1687%	6.1179%	8.5407%	6.8361%	9.5750%	13.0609%	13.8174%	13.5493%
Wachstum	2.3869%	3.9874%	5.6434%	6.9572%	7.4439%	4.0272%	5.8807%	4.5046%	6.6576%	9.3816%	9.8871%	9.4472%
Basis	1.3243%	2.6112%	3.7676%	4.9147%	4.8201%	1.9441%	3.2591%	2.1901%	3.7889%	5.7945%	6.0688%	5.4823%
Defensiv	0.2573%	1.1914%	1.8586%	2.8593%	2.2102%	-0.1343%	0.6504%	-0.1246%	0.9314%	2.2490%	2.2877%	1.5514%
Obligationen	-0.8057%	-0.1393%	0.0497%	0.9151%	-0.2816%	-2.1275%	-1.8537%	-2.3405%	-1.7928%	-1.0829%	-1.2553%	-2.1275%
Stabil	-0.0104%	-0.0208%	-0.0416%	-0.0520%	-0.0730%	-0.0836%	-0.1046%	-0.1046%	-0.1151%	-0.1256%	-0.1361%	-0.1466%

Anlagestrategien Avadis Vermögensbildung SICAV: Nettorenditen Januar - Dezember 2012



Die Zahlen zeigen die Renditen für Anleger, die seit Anfang Jahr in derselben Anlagestrategie investiert sind. Nettorendite nach Abzug der Kosten und vor Verrechnung Superzins. Angaben in Prozent. Die ausgewiesenen Renditewerte stellen keine Gewähr für zukünftige Renditewerte dar.

Nettoinventarwert (Anteilscheinkurs)

	Jan	Feb	Mrz	Apr*	Ausschüttung	Mai	Jun	Jul	Aug	Sep	Okt	Nov	Dez
Aktien	93.92	97.45	98.49	97.14	0.65	92.38	95.29	98.77	98.80	100.66	100.01	101.28	103.04
Aggressiv	97.57	100.57	101.38	99.94	0.95	96.26	98.63	101.80	101.85	103.42	102.94	104.02	105.43
Wachstum	101.64	104.06	104.62	103.08	1.25	100.55	102.30	105.13	105.21	106.45	106.16	107.05	108.09
Basis	102.50	104.25	104.54	102.88	1.60	101.60	102.69	105.07	105.17	106.04	105.94	106.60	107.23
Defensiv	101.98	103.03	103.05	101.31	1.90	101.28	101.68	103.56	103.68	104.18	104.28	104.70	104.92
Obligationen	99.38	99.74	99.49	97.72	2.15	98.87	98.60	99.95	100.09	100.23	100.51	100.70	100.53
Stabil	96.75	96.78	96.77	96.23	0.55	96.23	96.23	96.20	96.18	96.16	96.14	96.12	96.10

*nach Ausschüttung

Monatsrendite

	Jan	Feb	Mrz	Apr	Mai	Jun	Jul	Aug	Sep	Okt	Nov	Dez
Aktien	3.9513%	3.7585%	1.0672%	-0.7107%	-4.9001%	3.1500%	3.6520%	0.0304%	1.8826%	-0.6457%	1.2699%	1.7378%
Aggressiv	3.3362%	3.0747%	0.8054%	-0.4833%	-3.6822%	2.4621%	3.2140%	0.0491%	1.5415%	-0.4641%	1.0492%	1.3555%
Wachstum	2.6874%	2.3810%	0.5382%	-0.2772%	-2.4544%	1.7404%	2.7664%	0.0761%	1.1786%	-0.2724%	0.8384%	0.9715%
Basis	2.0713%	1.7073%	0.2782%	-0.0574%	-1.2442%	1.0728%	2.3177%	0.0952%	0.8272%	-0.0943%	0.6230%	0.5910%
Defensiv	1.4323%	1.0296%	0.0194%	0.1553%	-0.0296%	0.3949%	1.8489%	0.1159%	0.4823%	0.0960%	0.4028%	0.2101%
Obligationen	0.8013%	0.3622%	-0.2507%	0.3819%	1.1768%	-0.2731%	1.3692%	0.1401%	0.1399%	0.2794%	0.1890%	-0.1688%
Stabil	0.0207%	0.0310%	-0.0103%	0.0103%	0.0000%	0.0000%	-0.0312%	-0.0208%	-0.0208%	-0.0208%	-0.0208%	-0.0208%

Kumulierte Rendite (YTD)

	Jan	Feb	Mrz	Apr	Mai	Jun	Jul	Aug	Sep	Okt	Nov	Dez
Aktien	3.9513%	7.8583%	9.0094%	8.2346%	2.9310%	6.1733%	10.0508%	10.0842%	12.1567%	11.4324%	12.8475%	14.8085%
Aggressiv	3.3362%	6.5135%	7.3713%	6.8524%	2.9178%	5.4518%	8.8410%	8.8945%	10.5731%	10.0599%	11.2146%	12.7221%
Wachstum	2.6874%	5.1323%	5.6981%	5.4051%	2.8181%	4.6075%	7.5014%	7.5832%	8.8511%	8.5546%	9.4647%	10.5281%
Basis	2.0713%	3.8140%	4.1028%	4.0430%	2.7485%	3.8509%	6.2578%	6.3589%	7.2387%	7.1376%	7.8051%	8.4422%
Defensiv	1.4323%	2.4766%	2.4965%	2.6557%	2.6253%	3.0306%	4.9355%	5.0571%	5.5638%	5.6651%	6.0907%	6.3136%
Obligationen	0.8013%	1.1664%	0.9129%	1.2983%	2.4904%	2.2105%	3.6100%	3.7551%	3.9002%	4.1905%	4.3874%	4.2112%
Stabil	0.0207%	0.0517%	0.0414%	0.0517%	0.0517%	0.0517%	0.0205%	-0.0003%	-0.0211%	-0.0419%	-0.0627%	-0.0835%